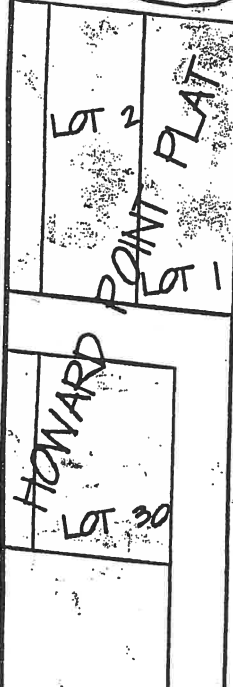


Signature Michael E. Reynolds
 Date 5/5/06

RIPARIAN REVERSION LINE BEARING = N2°12'06"W

PROPERTY LINE BEARING = N0°05'29"E (M)
 PROPERTY LINE BEARING = N1°11'E (PLAT)



THORNAPPLE

LAKE

RIPARIAN REVERSION LINE BEARING = N25°50'57"W (M)
 N25°52'15"W (R)
 LINE BEARING = N25°50'57"W (M)

FEB 9 2006

FLOATING DOCK WITH SLIPS FOR 24 BOATS

638' P/L TO C/L OF LAUNCH
 21 PONTON DOCKS ON 12 CENTERS
 12 ROWBOATS ON 8' CENTERS

275' P/L TO C/L OF LAUNCH
 21 PONTON DOCKS ON 12 CENTERS

BOAT LAUNCH

HIGHBANKS CREEK

BEACH

CAMP

THORNAPPLE



CLIENT CAMP THORNAPPLE			
JOB NO. 5491	SCALE 1" = 100'	DRAWN BY BR	DATE FEBRUARY 3, 2006
SURVEY TO DETERMINE RIPARIAN REVERSION RIGHTS, WITH PROPOSED DOCK LAYOUT, IN SUPPORT OF MARINA PERMIT APPLICATION.			

BRIAN REYNOLDS, PROFESSIONAL SURVEYOR
 Reynolds - Heritage Land Surveying and Mapping, P.A.
 A Professional Corporation
 130 West State Street
 Hastings, Michigan 49057
 269-945-2666 fax: 945-9542